

FC1300 Fiber & Copper Multimeter

High Precision, Multi Touch, 5.0 inch Screen
and Ultra-short Event Dead Zone for any Cable Testing Situations

- Auto OTDR
- Expert OTDR
- Event Map
- Optical Power Meter
- Optical Light Source
- Insertion Loss
- Visual Fault Locator
- RJ45 Cable Tracking
- RJ45 Cable Sequence
- RJ45 Cable Length
- Space Distance
- LED Light



Configuration

Model#	Hot Sale			
	FC1300-D32	FC1300-A26	FC1300-B32	FC1300-M24
Wavelength	1310nm & 1550nm	1625nm	1650nm	850nm & 1300nm
Dynamic Range	32/30dB	26dB	32dB	24dB
Testing Range	1 m to 125km	1 m to 90km	1 m to 125 km	3 m to 60km
Auto OTDR	√	√	√	√
Manual OTDR	√	√	√	√
Power Meter	√	√	√	√
Light Source	√	√	√	√
Visual Fault Locator	√	√	√	√
Insertion Loss Testing	√	√	√	√
LED Lighflash	√	√	√	√
Event Map	√	√	√	√
RJ45 Cable Distance	√	√	√	√
RJ45 Cable Sequence	√	√	√	√
RJ45 Cable Tracking	√	√	√	√
Space Distance	√	√	√	√
Active Fiber Testing	x	√	√	x

Request a Remote Demo
sales@FirstFiber.cn

The Kit Includes: OTDR, FC/SC Connector, User Manual, TF Card, OTDRviewer Software, Power Charging Adapter, Cleaning Tool, Carrying Case, Certificate of Calibrate

General	
Size/Weight	186x128x56mm/ 550g (Battery included)
Display	5.0 inch touch-sensitive LCD TFT Screen, 800x480 Resolution
Interface	USB, RJ45 Port, OTDR port, VFL port, Power Meter Port, Charging Port
Power Supply	Input: 100V(ac) to 240V(ac), 50~60Hz, 0.6A; Output: 5V(DC), 2A 5000mAh/5V Lithium battery (with air traffic certification)
Working Time	>15 hours
Power Saving	Intelligent power management Auto power off: Never/1min/5min/10min/30min/60min
Data Storage	8GB (about 20,000 curves)
Language	English, other language can be customized
Environmental Conditions	Operating temperature and humidity: -10°C~+50°C, ≤95% (non-condensation) Storage temperature and humidity: -40°C~+70°C, ≤95% (non-condensation)

OTDR Module	
Pulse Width	3ns,5ns,10ns,20ns,30ns,50ns,80ns,160ns,320ns,500ns,800ns,1μs,2μs,5μs,10μs,20μs
Distance Range	0.1km, 0.3km, 0.5km, 1.25km, 2.5km, 5km, 10km, 20km, 40km, 80km, 125km, 260km
Sampling Resolution	0.015 to 16m
Sampling Point	160,000 points
Linearity	≤0.03dB/dB
Averaging Time	Setting by user
Scale Indication	X axis: 4~70m/div, Y axis: 0.09~5dB/div
Distance Accuracy	±(0.75m+measuring distance×2.5×10 ⁻⁵ +sampling resolution)
Real Time Refresh	4Hz (Typical Rate)
Loss Resolution	0.001dB
Distance Resolution	0.001m
IOR Setting	1.0~2.0, 0.0001 step
Units	km, mile, kft
OTDR Trace Format	SOR

VFL Module	
Wavelength	650nm
Output Power	10mw, CLASSIII B
Range	12km
Launching Mode	CW/1Hz/2Hz

OPM Module	
Wavelength	850/980/1300/1310/1490/1550/1625/1650nm
Test Range	-50~+ 26dBm
Resolution	0.01
Accuracy	±0.5%
Modulation	270/330/1k/2k Hz, Pi≥-40dBm

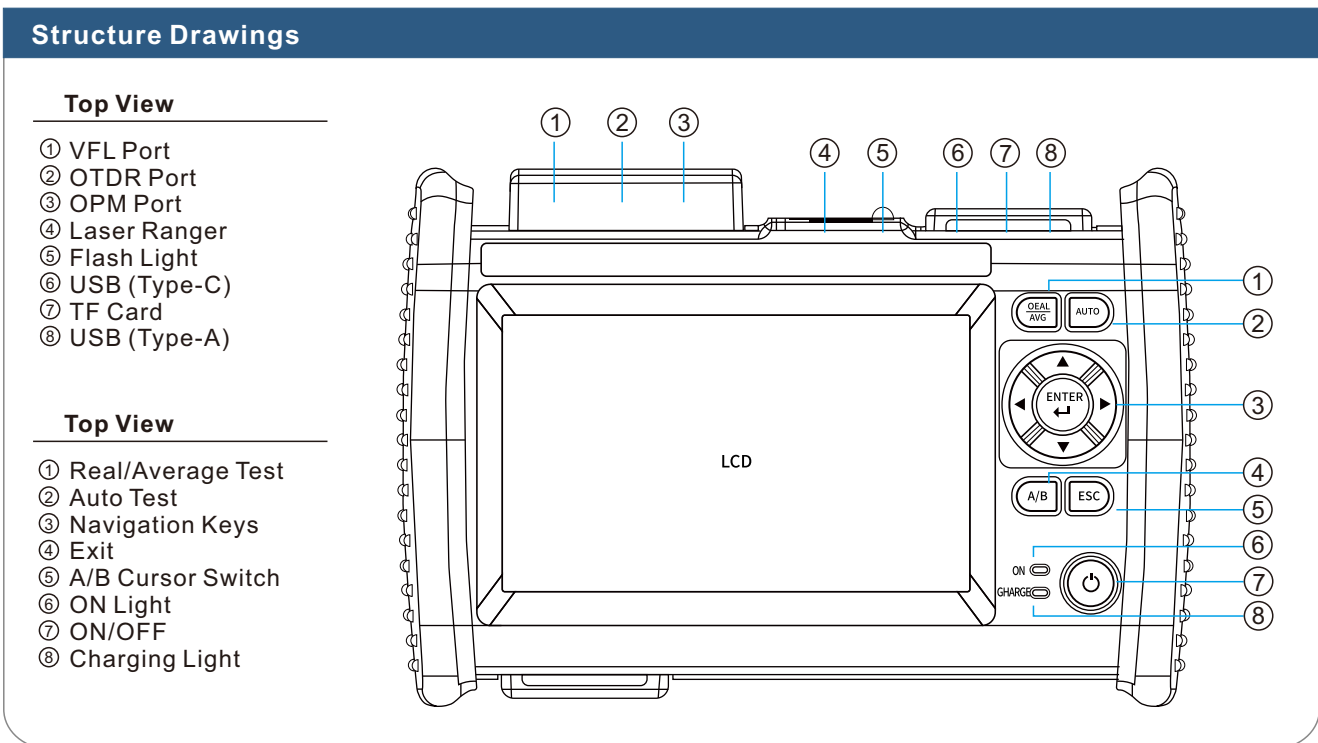
OLS Module	
Wavelength	Same as OTDR Wavelengths
Output Power	>-5dBm
Output mode	CW/270/330/1k/2k Hz

RJ45 Cable Tracker	
Testing Range	300 meters
Signal Type	Analog signal/Digital Signal
Active Cable Track	Support
Signal Receiver	Sent as a default Accessories
Warning Sound	Yes
Rj45 Cable Type	Support both 568A and 568B

RJ45 Cable Sequence	
Testing Range	300 meters
Signal Type	Analog signal/Digital Signal
Active Cable Test	Not Support
Remote Unit	Can be took out from bottom of the device
Rj45 Cable Type	Support both 568A and 568B
Testing Time	Less than 15s

RJ45 Cable Length	
Testing Range	300 meters
Signal Type	Analog signal/Digital Signal
Active Cable Test	Not Support
Testing Time	Less than 15s

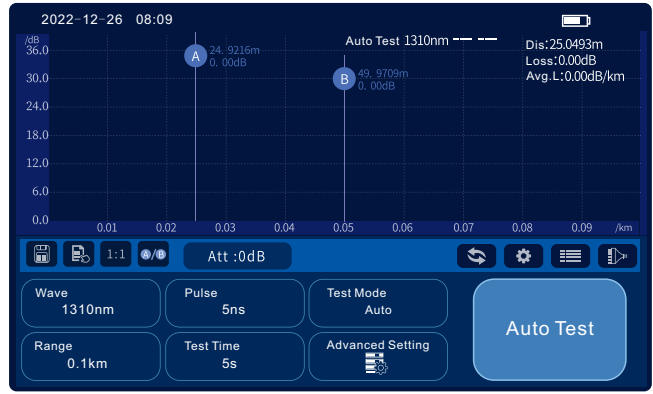
Space Distance Testing	
Testing Range	0.05 to 40 meters
Resolution	2mm
Laser Wavelength	620nm to 690nm
Security Level	Class II, <1mW



Functions & Settings



Home

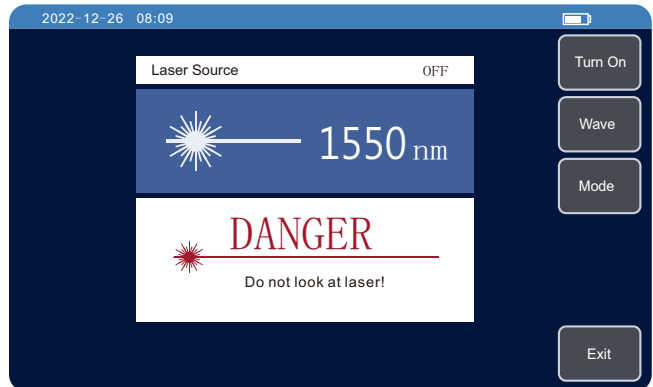


OTDR

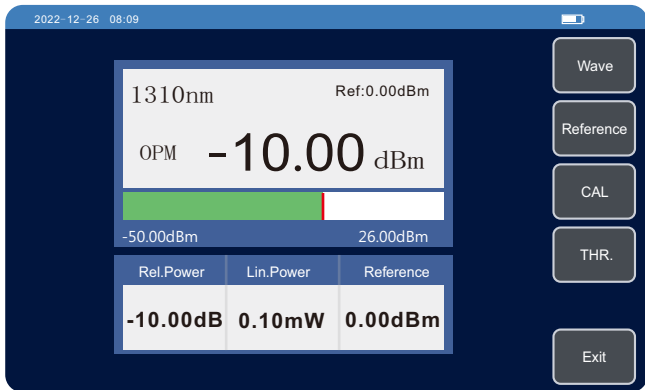
NO	Type	Distance km	Section km	Loss dB	Total-L dB	Avg.L/km	Return dB
1		0.22548	0.22548	0.225	0.225	0.998	39.122
2		0.73713	0.51203	0.125	0.350	0.475	37.239
3		1.24900	0.51232	2.326	2.676	2.143	26.653
4		1.76101	0.51216	0.295	2.971	1.687	50.059

Parameter	Length	Total-L	Event
SM 1310nm	1.76101km	2.971dB	5
SM 1550nm	1.76101km	2.976dB	5

Event Map



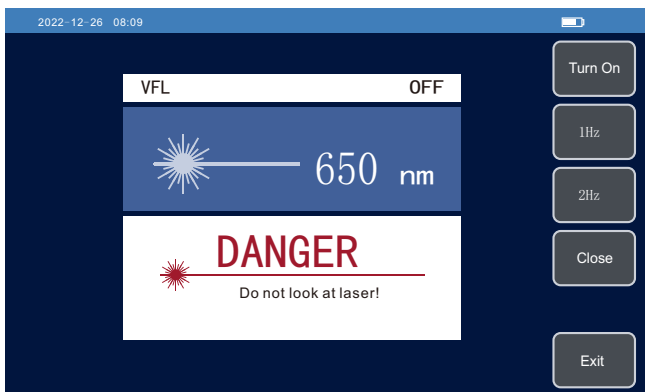
Laser Source



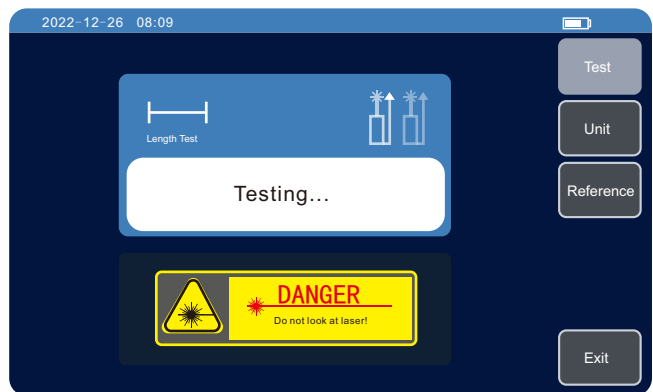
Optical Power Meter



Loss Test



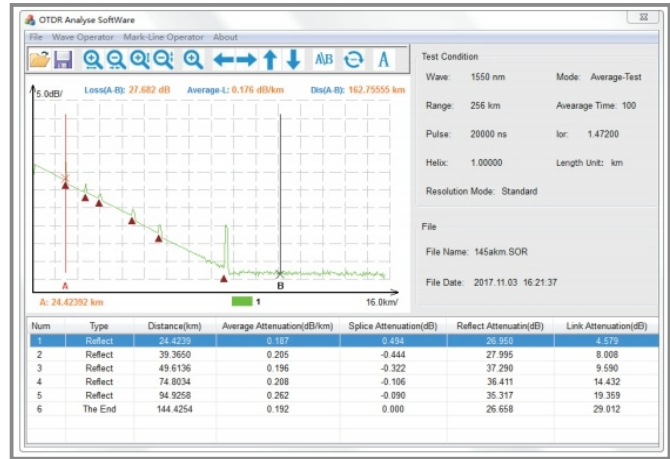
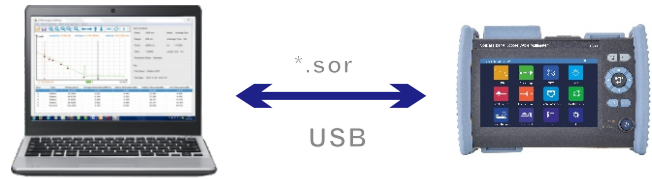
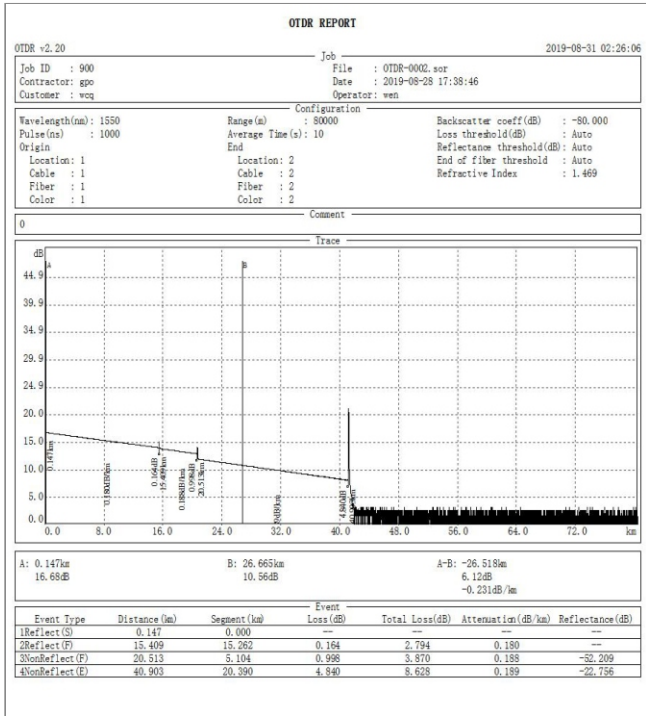
Visual Fault Locator



Space Ranger

Please visit the link for more pictures and video demo
www.firstfiber.cn/otdr-fc1300.html

OTDR Report Printing

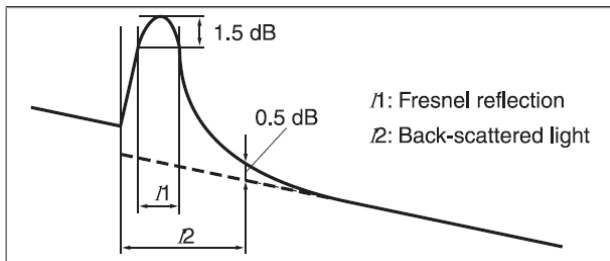


PC Software

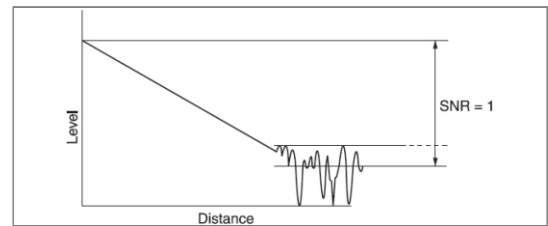
Key Parameters Explanation

Notes

Dynamic range is measured with maximum pulse width, averaging time is 3 minutes, SNR=1; The level difference between the RMS noise level and the level where near end back-scattering occurs.



Instructions of OTDR Curves and Events that displayed on OTDR screen.



Event dead zone is measured with pulse width of 10ns; attenuation dead zone is also measured with pulse width of 50ns.

