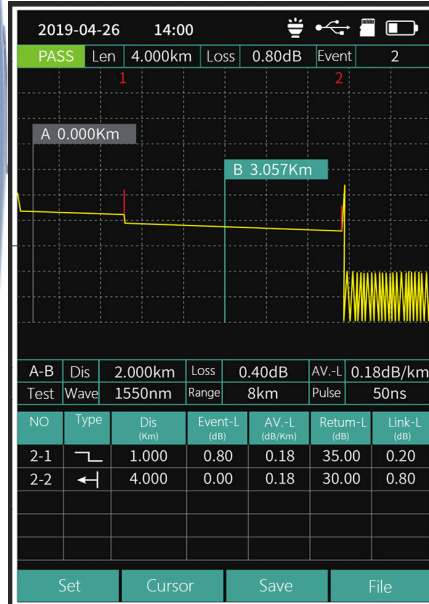


FF-980REV Mini Pro OTDR

High Precision, Portable for Easy Carrying,
and Ultra-short Event Dead Zone for any Cable Testing Situations

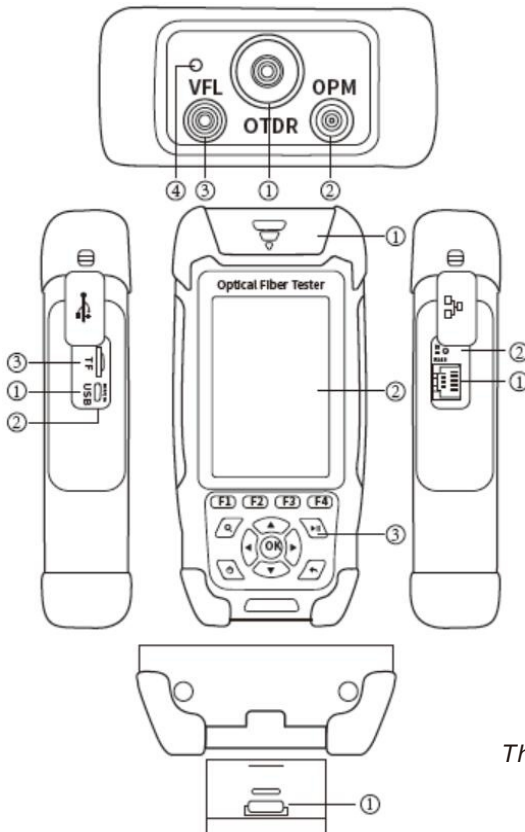


9-in-1



- OTDR (Auto Test)
- OTDR (Average Test)
- OTDR (Real Time Test)
- Event Map
- Optical Power Meter
- Optical Light Source
- Visual Fault Locator
- Rj45 Cable Tracking
- Rj45 Cable Sequence
- Rj45 Cable Length
- LED Light

Configuration



Top View

- ① OTDR/LS Port
- ② OPM Port
- ③ VFL Port
- ④ Flashlight

Front View

- ① Dust Cover
- ② 3.5 inch Screen
- ③ Function Keys

Left Side

- ① Micro USB Port
- ② Charging Indicator
- ③ TF Card Port

Right Side

- ① Rj45 Connector
- ② Reset Button

Bottom View

- ① Rj45 Remote Unit

Request a Remote Demo
sales@FirstFiber.cn

The Kit Includes: OTDR, FC/SC Connector, User Manual, USB Disc
OTDRviewer Software, Power Charging Adapter, Rj45
Signal Receiver(Optional), Carrying Case,
Certificate of Calibrate

General	
Size/Weight	173x82x37mm/ 350g (Battery included)
Display	3.5 Inch Colorful Screen
Interface	USB, TF Card Port, Rj45 Port, OTDR port, VFL port, Power Meter Port, Charging Port
Power Supply	Input: 100V(ac) to 240V(ac), 50~60Hz; Output: 5V(DC), 2A 4000mAh/3.7V Lithium battery (with air traffic certification)
Working Time	>8 hours; Charging < 5 hours
Power Saving	Intelligent power management Auto power off: Never/1min/5min/10min/30min/60min
Data Storage	TF Card (8G Max)
Language	English in Default, Russian/Portugal/Vietnamese (Optional)
Environmental Conditions	Operating temperature and humidity: -10°C~+50°C, ≤95% (non-condensation) Storage temperature and humidity: -40°C~+70°C, ≤95% (non-condensation)

OTDR Module	
Pulse Width	3ns,5ns,10ns,20ns,30ns,50ns,80ns,160ns,320ns,500ns,800ns,1μs,2μs,5μs,10μs
Distance Range	500m,1km, 2km, 4km, 8km, 16km, 32km, 64km
Sampling Resolution	Minimum 0.2m
Sampling Point	Maximum 128,000 points
Linearity	≤0.2dB/dB
Averaging Time	Setting by user
Scale Indication	X axis: 4~70m/div, Y axis: 0.09~5dB/div
Distance Accuracy	±(1m+measuring distance×3×10 ⁻⁵ +sampling resolution) (excluding IOR uncertainty)
Loss Threshold	0.01dB
Loss Resolution	0.001dB
Distance Resolution	0.01m
IOR Setting	1.0~2.0, 0.0001 step
Units	km
OTDR Trace Format	Telcordia universal, SOR, issue 2(SR-4731)

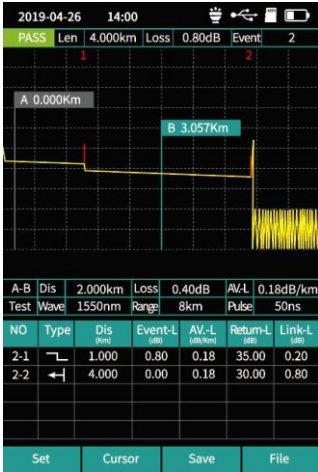
VFL Module	
Wavelength	650nm
Output Power	10mw, CLASSIII B
Range	12km
Launching Mode	CW/1Hz/2Hz
Adapter Type	2.5mm Universal Adapter for FC SC ST Connectors

OPM Module	
Wavelength	850/980/1300/1310/1490/1550/1625/1650nm
Test Range	-70~+ 10dBm or -50~+ 26dBm (in default)
Accuracy	±0.35dB±1nW
Modulation	270/330/1k/2k Hz, Pi≥-40dBm

OLS Module	
Laser Type	FP-LD
Wavelength	1310/1550nm
Output Power	> -5dBm
Output Mode	CW/270/330/1k/2k Hz

Rj45 Module	
Testing Range	>300 meters
Standards	T568A, T568B
Cable Sequence	Support
Tracking Function	Support

Functions & Settings



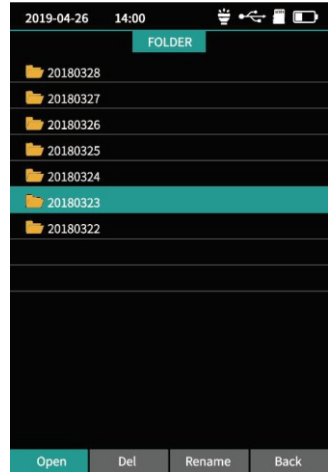
OTDR Curves



Testing Parameters



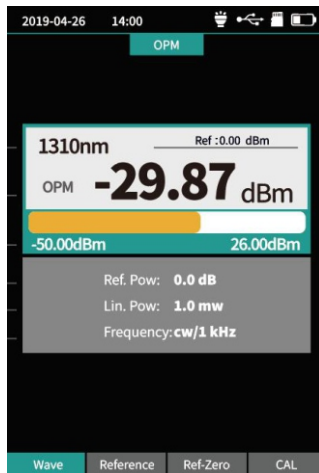
Sor Files Saving



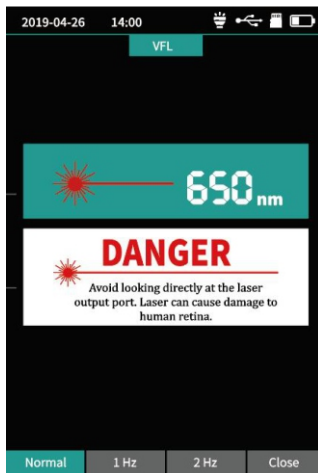
Testing Results



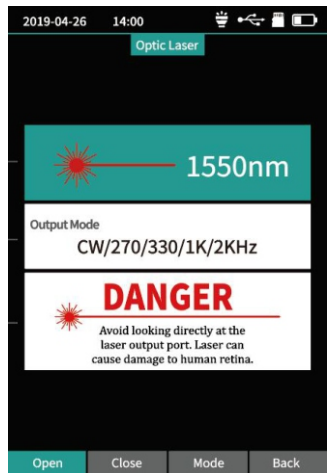
Event Map



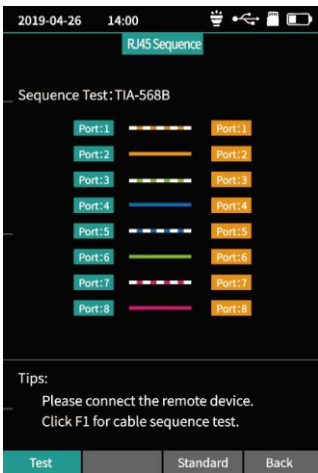
Power Meter



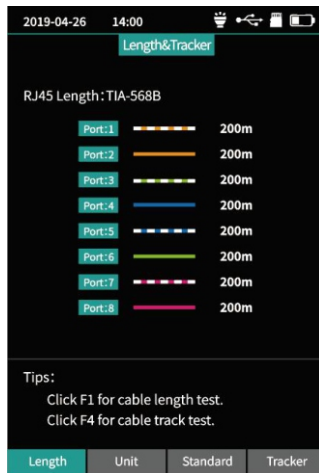
Visual Fault Locator



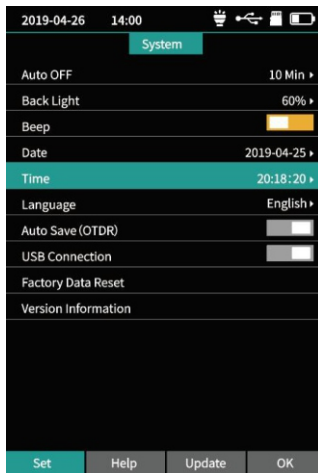
Light Source



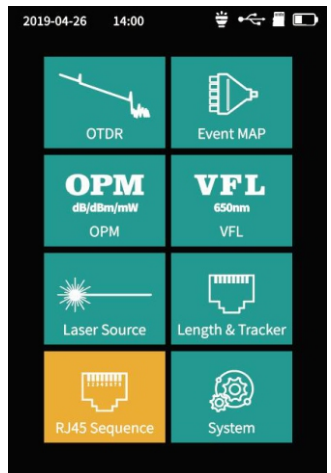
Sequence Test



Length & Tracking



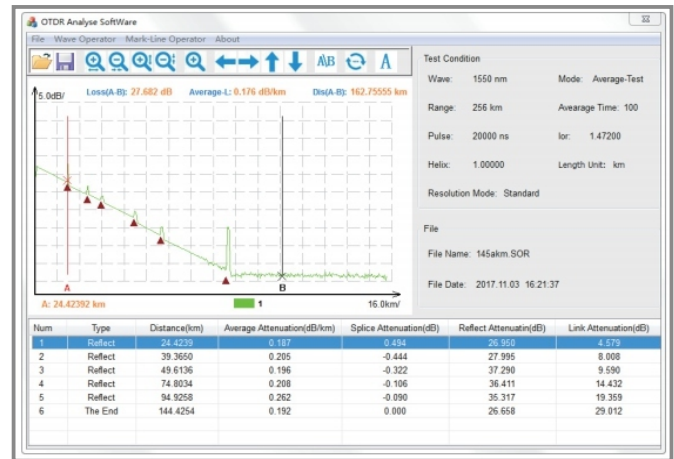
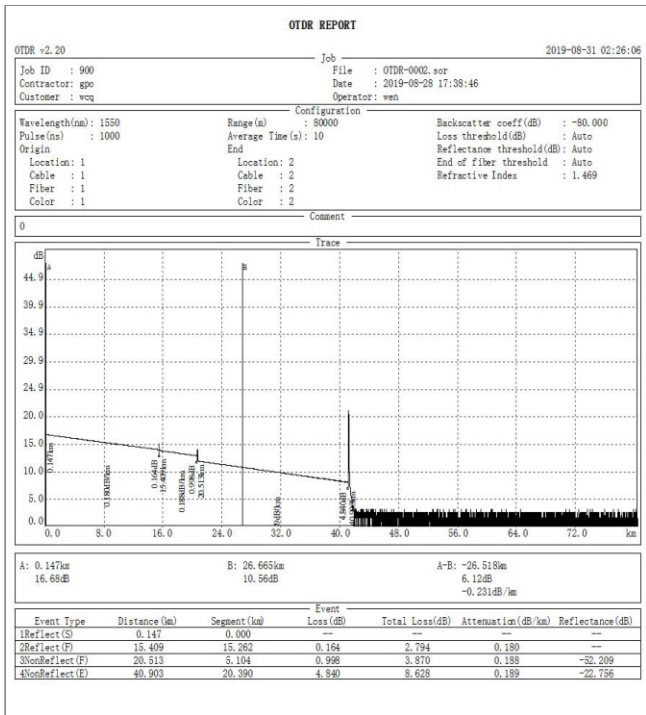
System Setting



Home

Please visit the link for more pictures and video demo <https://www.firstfiber.cn/ff-980rev-otdr.html>

OTDR Report Printing

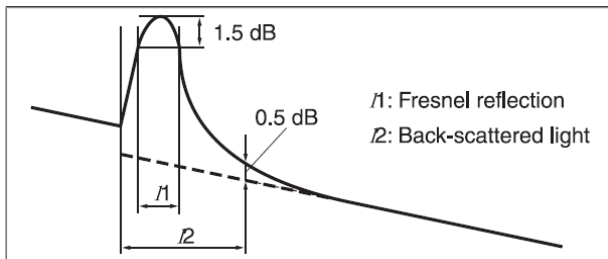
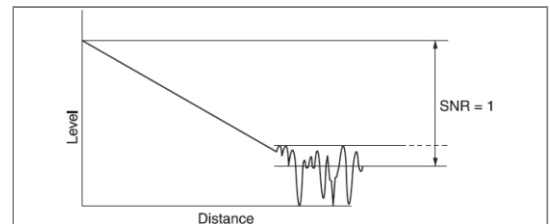


PC Software

Key Parameters Explanation

Notes

Dynamic range is measured with maximum pulse width, averaging time is 3 minutes, SNR=1; The level difference between the RMS noise level and the level where near end back-scattering occurs.



Event dead zone is measured with pulse width of 10ns; attenuation dead zone is also measured with pulse width of 50ns.

Instructions of OTDR Curves and Events that displayed on OTDR screen.

