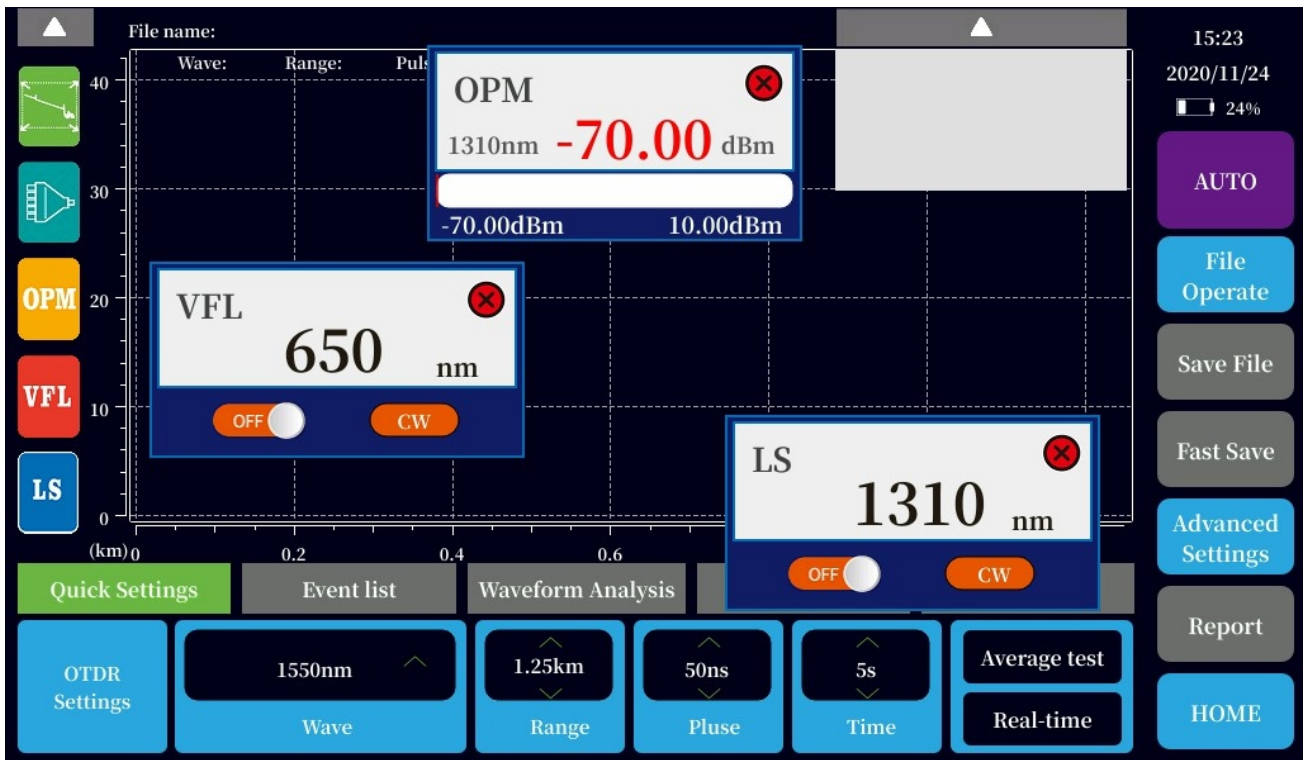


# H720 HIGH-END OTDR

Up to 45dB Dynamic Range, Support Multi Tasks Simultaneous Operation With WIFI, Bluetooth, Cloud Platform, GPS & Beidou functions

## Functions

- OTDR
- Intelligent Optical Network Map iONM
- Multi Core Test
- Optical Light Source OLS
- Visual Fault Locator
- Optical Power Meter
- Fiber End-face Detect (Microscope)
- Optical Loss Test
- File Management
- Rj45 Cable Tracking
- Laser Range Measurement
- Camera
- Internet of Thing IoT
- WIFI Connection
- Bluetooth Connection
- BeiDou& GPS
- Test Results Upload to Cloud
- Remote Assistant
- Cloud Platform and Android App



### ■ Multi Tasks

OPM, VFL, Light Source shows at the same time

### ■ Quick Setting and Check

Modify the test conditions without stopping, all conditions can be modified any time.

### ■ Powerful File Management

Save SOR, PDF, BMP and Upload to Cloud Platform

General	
<b>Size/Weight</b>	252mm×180mm×72mm/ 1.5kg (Battery included)
<b>Display</b>	7 inches 1024×600 IPS TFT - LCD, Multi touch Capacitive Touch Screen
<b>Interface</b>	2 USB-A, 1 Mini-USB, 1000M Ethernet port, Rj45port, 3.5mmAudio port
<b>Power Supply</b>	AC/DC adapter: Input 100V~240V, 50/60Hz, 0.6A Output 12V~19V, 3A, Lithium battery: 7.4V, 6400mAh
<b>Working Time</b>	>10 hours (high brightness, continuous working)
<b>Power Saving</b>	Back light control, Auto power off
<b>Wireless Connect</b>	Bluetooth, WIFI, BeiDou & GPS
<b>Data Storage</b>	8GB, over 20,000 curves
<b>Language</b>	English, Spanish, French, Korean, Italian, Portugal, Russian
<b>Environmental Conditions</b>	Operating temperature and humidity: -10℃~+50℃, ≤95% (non-condensation) Storage temperature and humidity: -40℃~+70℃, ≤95% (non-condensation)

OTDR Module	
<b>Pulse Width</b>	3ns/5ns/10ns/20ns/30ns/50ns/100ns/200ns/500ns/800ns/1μs/2μs/3μs/5μs/10μs/20μs
<b>Distance Range</b>	100m/300m/500m/1.25km/2.5km/5km/10km/20km/40km/80km/160km/260km/420km
<b>Sampling Resolution</b>	0.03125m~8m
<b>Sampling Point</b>	3.2k~320k
<b>Linearity</b>	≤0.05dB/dB
<b>Loss Analysis</b>	4-point method /5-point method
<b>Reflection Accuracy</b>	±3dB
<b>Distance Accuracy</b>	±(0.75m+sample interval+0.005%×test distance) ( excluding IOR uncertainty)
<b>Loss Threshold</b>	0.01dB
<b>Loss Resolution</b>	0.001dB
<b>Distance Resolution</b>	0.001m
<b>IOR Setting</b>	1.00000~2.00000, 0.00001 Step
<b>Units</b>	km, miles, kfeet
<b>OTDR Trace Format</b>	SOR Standard File Format
<b>Laser Safety Level</b>	Class II
<b>Refresh Rate</b>	10 Hz (Typical)
<b>Report</b>	Generate PDF report directly, Transmit to mobile phone trough Bluetooth
<b>Connection Detect</b>	Support
<b>Multi Tasking</b>	Support
<b>Remote Assistance</b>	Support

OPM Module	
<b>Wavelength</b>	850/980/1300/1310/1490/1550/1625/1650nm
<b>Test Range</b>	-70~+ 10dBm or -50~+ 26dBm
<b>Resolution</b>	0.01dB
<b>Uncertainty</b>	5%
<b>Frequency</b>	Identification CW/270/330/1000/2000Hz
<b>Connector</b>	2.5mm Universal, Compatible with FC, SC, ST
<b>Wave Recognition</b>	Support (FirstFiber's Light Source)
<b>Data Acquisition</b>	Support
<b>Threshold Set</b>	Support

**OLS Module**

<b>Wavelength</b>	Same as OTDR Wavelengths
<b>Laser Type</b>	FP-LD
<b>Output Power</b>	-5dBm~+3dBm, Adjustable
<b>Stability</b>	±0.5dB/15min(CW, After15min of preheating)
<b>Frequency Mode</b>	CW/270/330/1000/2000Hz
<b>Wave Recognition</b>	Support

**VFL Module**

<b>Wavelength</b>	650nm±20nm
<b>Output Power</b>	10mw, CLASSIII B
<b>Range</b>	12km
<b>Launching Mode</b>	CW/1Hz/2Hz
<b>Connector</b>	2.5mm Universal, Compatible with FC, SC, ST
<b>Laser Safety Level</b>	Class III

**Laser Ranging**

<b>Test Range</b>	0.05m to 40m
<b>Accuracy</b>	±2.0mm
<b>Laser Type</b>	620nm~690nm
<b>Output Power</b>	<1mW
<b>Laser Safety Level</b>	Class II

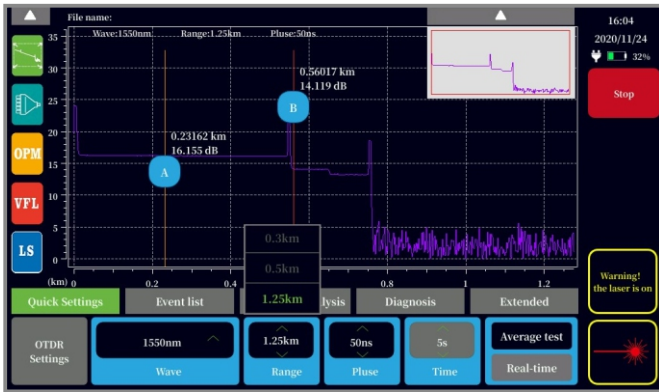
**Rj45 Cable Tracking**

<b>Mode</b>	Digital/Analog Tracking
<b>Distance</b>	>300m
<b>Online Tracking</b>	Support
<b>Line Pair Tracking</b>	Support

**Optical Loss Test**

<b>Wavelength</b>	Consistent with OLS
<b>Test Range</b>	Consistent with OPM
<b>IL Test</b>	Support

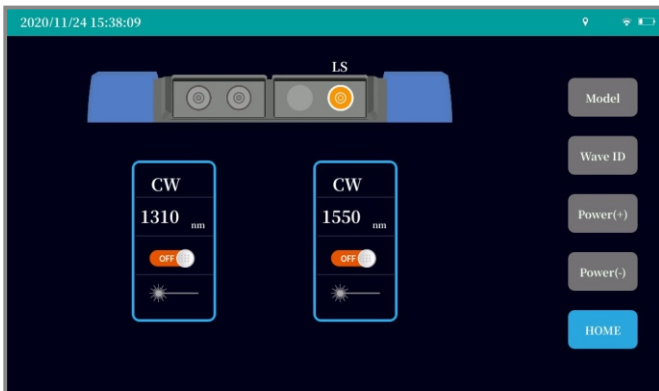
### Functions Display



OTDR Curve & Event List

Type	Locate/Length	Loss(dB)	Reflect rate(dB)	Slope(dB/km)
0	0.00000	0.00000	32.28464	-----
	0.54630	0.10479	-----	0.19181
1	0.54630	2.06900	46.28534	-----
	0.10415	0.05265	-----	0.50533

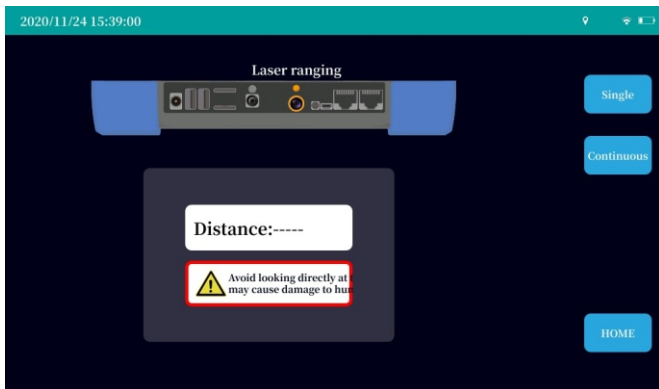
iONM



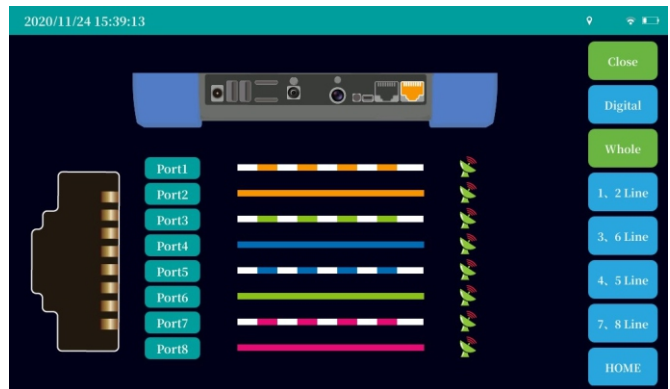
Optical Laser Source



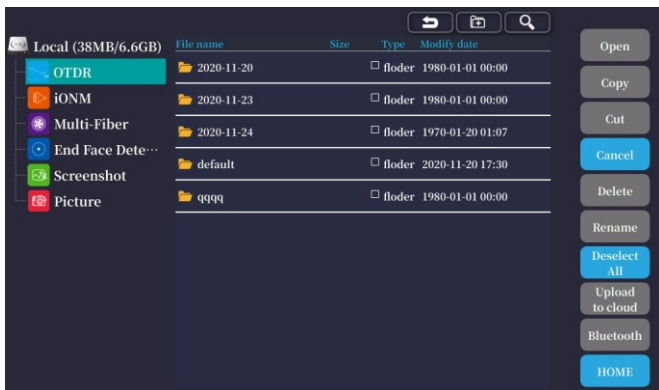
Optical Power Meter



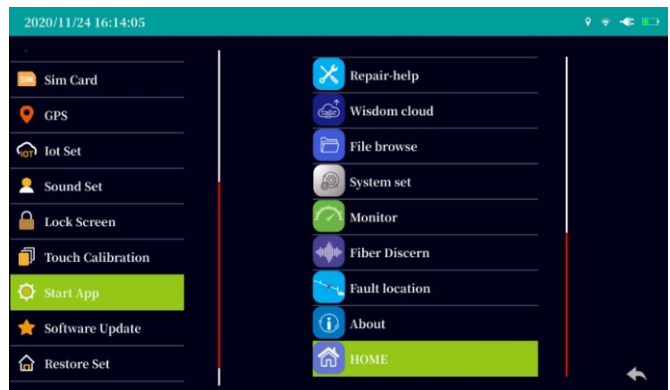
Laser Ranging



RJ45 Cable Tracker



Files Management



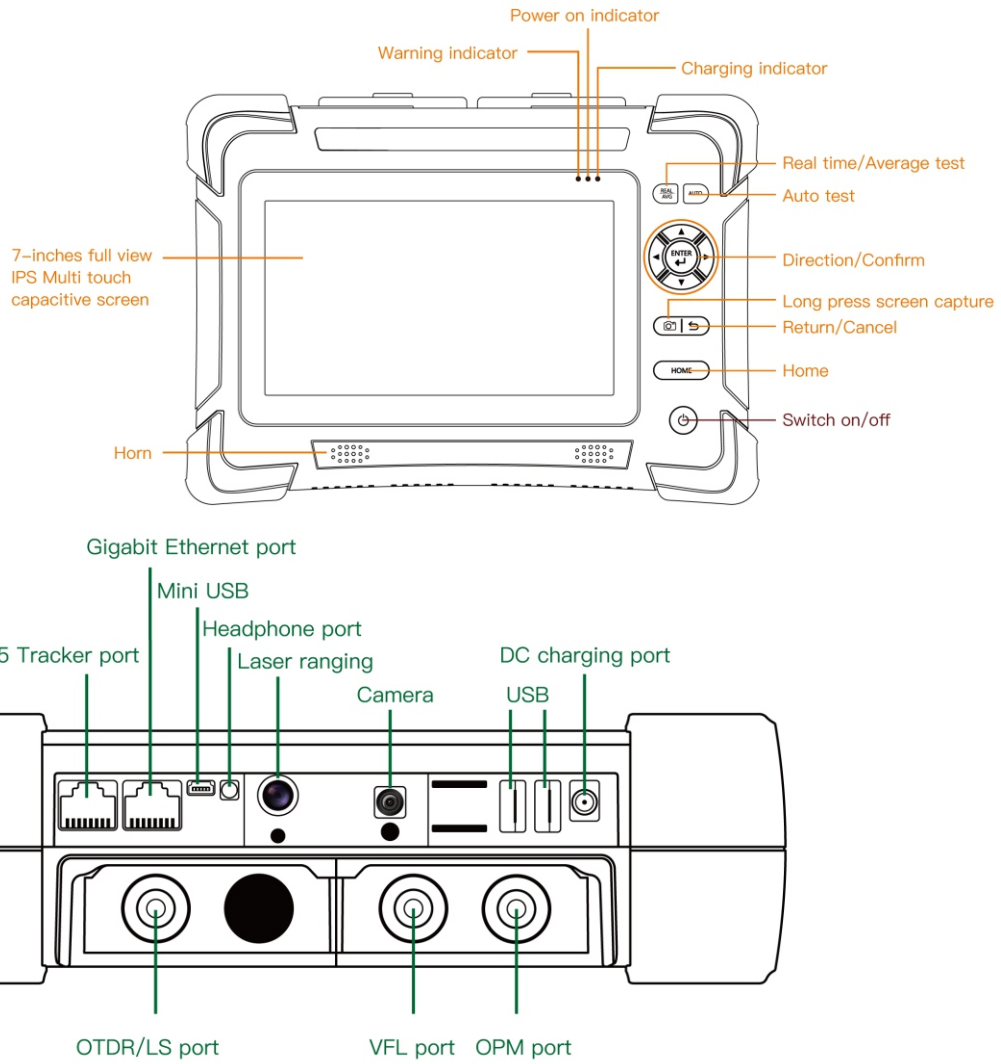
System Setting

★ for more pictures and video demo, please contact our sales or technical support tech@FirstFiber.cn





Structure Drawings



Ordering

Model	Wavelength	Dynamic Range
H720-S1	1310nm/1550nm	35dB/33dB
H720-S2	1310nm/1550nm	37dB/35dB
H720-S3	1310nm/1550nm	40dB/38dB
H720-S4	1310nm/1550nm	42dB/40dB
H720-S5	1310nm/1550nm	45dB/43dB
H720-T1F1	1310nm/1550nm/1625nm	37dB/35dB/35dB
H720-T1F2	1310nm/1550nm/1625nm	40dB/38dB/38dB
H720-T2F1	1310nm/1550nm/1650nm	37dB/35dB/35dB
H720-T2F2	1310nm/1550nm/1650nm	40dB/38dB/38dB
H720-M1	850nm/1300nm	26dB/28dB
H720-SM1	850nm/1300nm/1310nm/1550nm	26dB/28dB/35dB/33dB
H720-SM2	850nm/1300nm/1310nm/1550nm	26dB/28dB/38dB/36dB

*The Kit Includes: OTDR, OTDR FC/SC Connector, OTDRviewer Software, OPM FC/SC Connector, Power Charging Adapter, Cleaning Tool, Carrying Case, User Manual, Certificate of Calibrate, RJ45 Signal Receiver(optional), Fiber Inspection Probe (optional)*